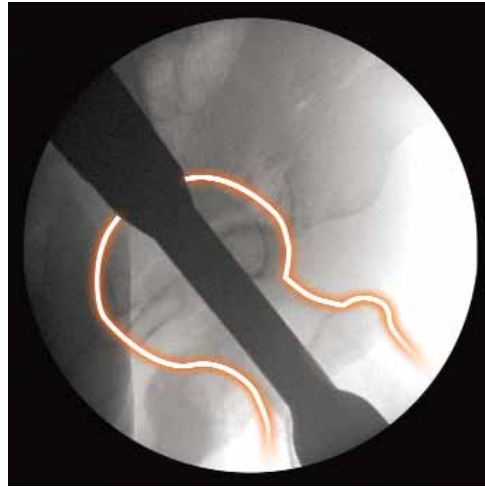


Percutaneous Instrument Guide



Instrument Features & Benefits



Percutaneous Drill Guide

Cat. No. 7163-1021

- Long barrel allows for minimally invasive incision
- Thin neck section provides superior lateral visualization of the femoral neck and head for simplified anteversion control



AP Alignment Tower & Arm

Cat. No. 7163-1025 & 7163-1015

- Facilitates nail insertion depth assessment
- Easy assembly and attachment to either the Radiolucent Drop or Percutaneous Drill Guide
- Radiolucent material allows for proximal targeting of 5.0mm locking and 6.4mm recon locking screw prior to insertion



Radiolucent Drop

Cat. No. 7163-1022

- One drop targets all TAN & FAN implants, including the Adolescent TAN
- Composite material provides enhanced visualization in the lateral plane
- Snap fit connection simplifies and secures drill guide attachment



4.0mm Trocar Drill Sleeve & Trocar

Cat. No. 7163-1026 & 7163-1191

- Trocar tip facilitates drill sleeve insertion through soft tissue down to bone
- Self-retaining mechanism helps prevent 4.0mm Trocar Drill Sleeve back-out



14mm Channel Reamer

Cat. No. 7163-1023

- Serves as a working channel to facilitate medullary canal preparation
- Designed to protect the lateral wall of the proximal femur and reduce damage to the gluteus medius tendon during surgery
- Side slots allow for ruler visualization during implant measurement

**Orthopaedic Trauma &
Clinical Therapies**

Smith & Nephew, Inc.
1450 Brooks Road
Memphis, TN 38116
USA

www.smith-nephew.com

Telephone: 1-901-396-2121
Information: 1-800-821-5700
Orders/Inquiries: 1-800-238-7538